

A Day in the life of a Quality Engineer

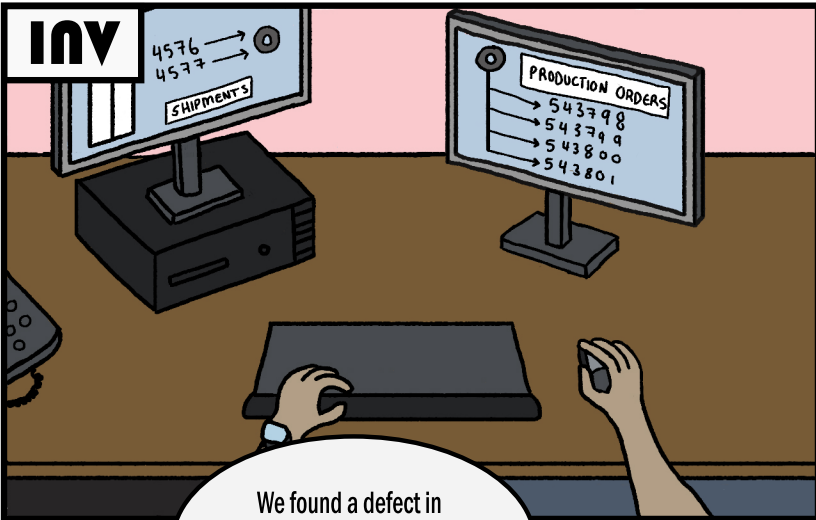
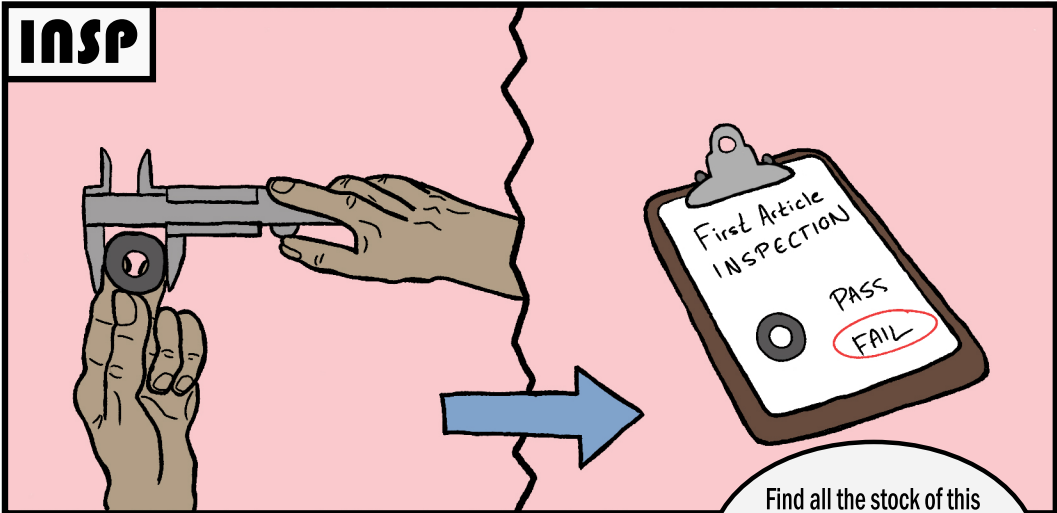
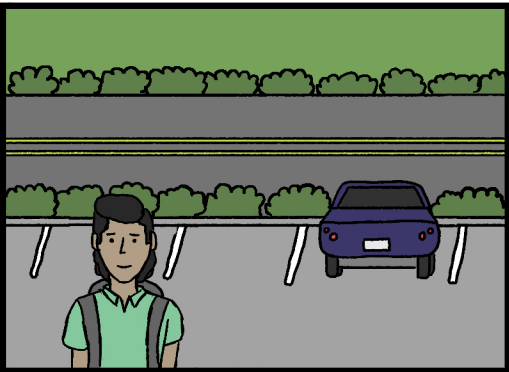
INSP INSPECT - Quality engineers perform inspections on products, components, or processes against specifications and standards to ensure they meet quality requirements before release or further production.

INV INVESTIGATE - Quality engineers investigate defects, process deviations, and customer complaints to determine root causes, gathering evidence and collaborating with cross-functional teams to identify problems.

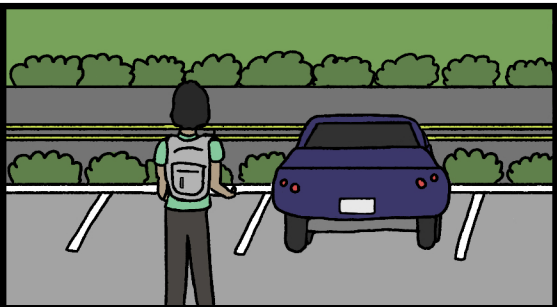
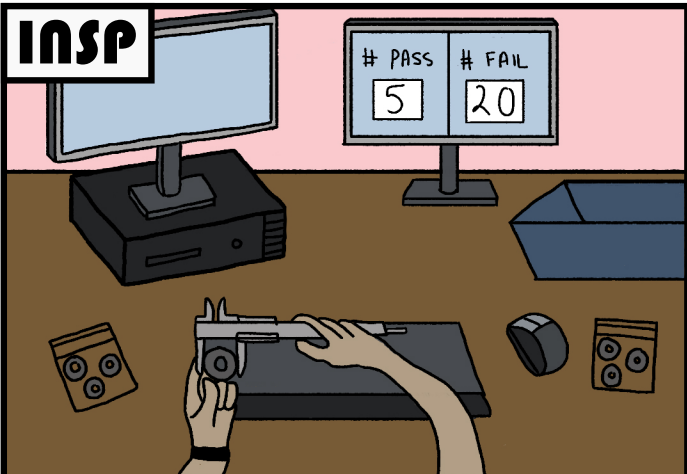
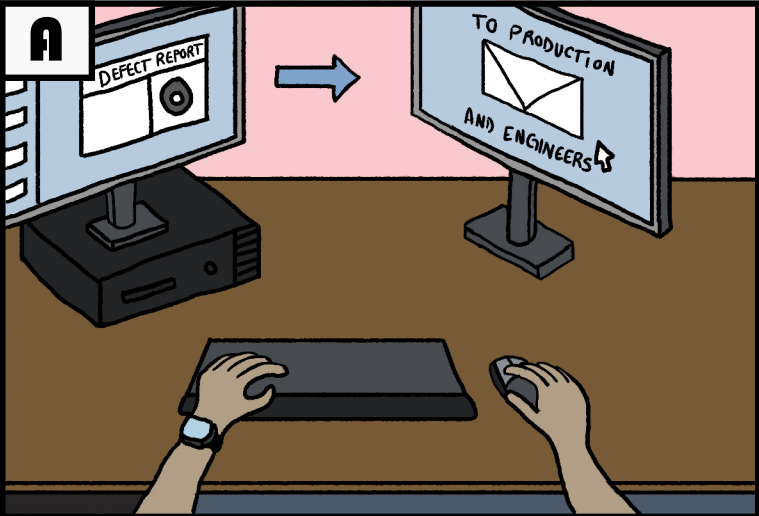
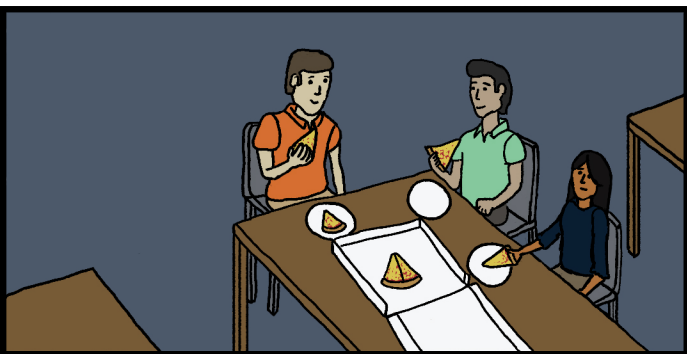
C COMMUNICATE - Quality engineers communicate findings, corrective actions, and quality metrics clearly to internal and external stakeholders at all levels—whether writing reports, presenting results, or training teams to maintain quality standards.

A ANALYZE - Quality engineers analyze data from tests, inspections, and production metrics to spot trends, assess process capability, and drive continuous improvement decisions.

7:30 AM



12:30 PM



4:30 PM